

Sentry House, Frimley Road CAMBERLEY, GU15 2QN

From **£110,000** Share Of Freehold



A newly converted development of only eleven studio and one bedroom apartments. The apartments have been converted to a high standard and vary in size providing an excellent choice representing an ideal purchase for first time buyers and investors alike. Sentry House is conveniently situated being within walking distance of local shops, restaurants and a bus service providing access to nearby Camberley town centre with railway station and Frimley with railway station and Frimley Park Hospital.

These particulars have been produced in good faith and are believed to be materially correct and fair though their accuracy is not guaranteed and not intended to form part of any contract. None of the appliances or devices have been tested by Luff & Wilkin Property Specialists Ltd and no warranty is given or implied as to their working order.

 
Registered Office: 13 Claremont Avenue,
Camberley, Surrey GU15 2DR
Registered No. 8078018 England and Wales

luffandwilkin.co.uk
info@luffandwilkin.co.uk
tel 01252 838 899 fax 01252 838 858
1 Guildford Road, Frimley Green, Surrey GU16 6NL

Summary

Sentry House consists of eleven, newly converted studio and one bedroom apartments.

Each apartment has been imaginatively and thoughtfully laid out and planned and finished to a high standard.

Some of the noteworthy features include, space saving foldaway double bed base and settee in the studio apartments, shower rooms with double size shower cubicle, foldaway kitchen area with built in appliances, fitted carpets, window blinds and electric heating.

Apartments five to eleven situated on the first floor have been released and are available for viewing, apartment ten being a show studio apartment.

There are a further four apartments on the ground floor, three being one bedroom units and one studio. Also on the ground floor there is a bicycle store and the main reception hall.

Each apartment is being sold with the benefit of a share of the freehold interest.

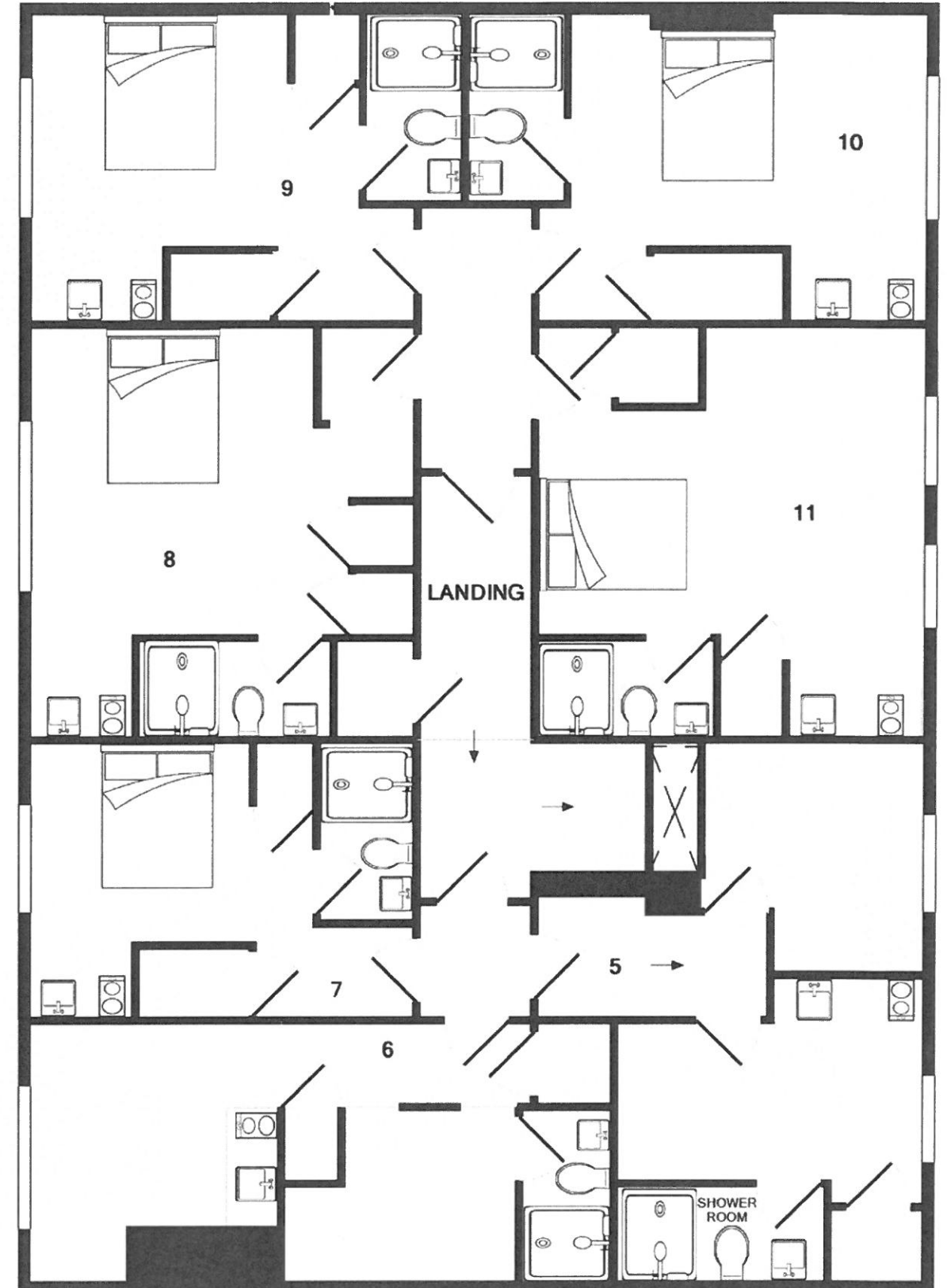
Agents Note

The photo's shown are of Apartment 10, currently being used as the show apartment.

VIEWING

Strictly by appointment with Luff & Wilkin telephone 01252 838899.

Office Hours - Monday to Friday 9am - 6pm (usually later) Saturdays 9am - 5pm



Whilst every attempt has been made to ensure the accuracy of the floor plan contained here, measurements of doors, windows, rooms and any other items are approximate and no responsibility is taken for any error, omission, or mis-statement. This plan is for illustrative purposes only and should be used as such by any prospective purchaser. The services, systems and appliances shown have not been tested and no guarantee as to their operability or efficiency can be given
Made with Metropix ©2017